

# Show highlights

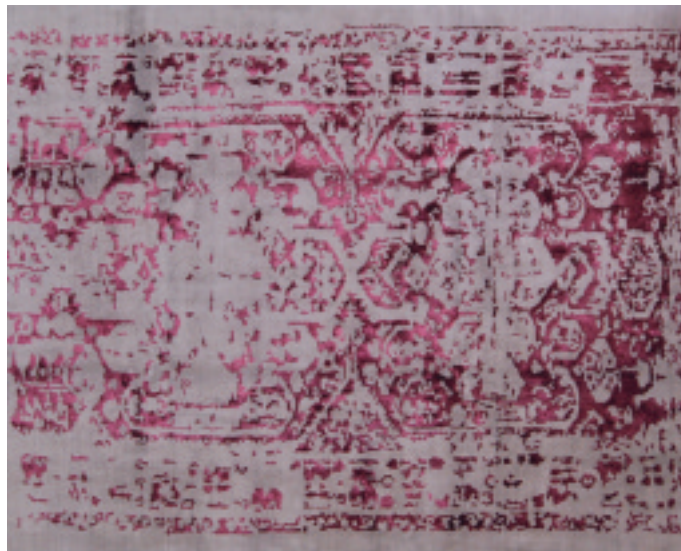
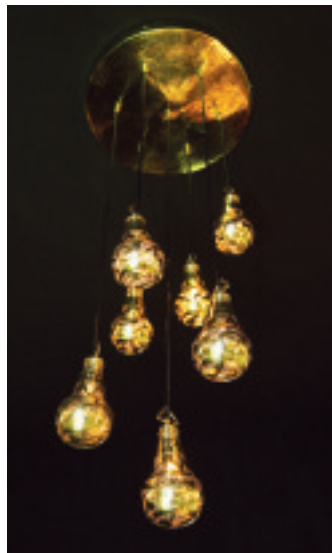
**VICTORIA REDSHAW AND SHELLEY POND OF SCARLET OPUS SHARE THEIR FIVE FAVOURITE INDEX FINDS.**

Index 2010 was full of surprises. In amongst the expected glitz and bling (still a look that's loved in the region), there were some unexpected gems. These could have been easily missed so here, in no particular order, are our top five

show highlights. These are the exhibitors that for us displayed real design clarity, forward thinking, and a unique approach to creativity; characteristics that, as trend forecasters, really got our pulses racing.

## KAFKA GOES PINK

There were a myriad exhibitors displaying Ottoman-style lighting and accessories but only Fady Saliba, of Kafka Goes Pink, honoured the tradition of this style – successfully adding a strong contemporary twist, which is something we've been yearning to see embraced in the region. His light bulb-style pendant clusters, Bulb, were particularly on-trend and forged a direct link with many lighting pieces we saw during London Design Festival. The intricate punched-out patterns within his metal lighting pieces throw lace-like shadows onto surrounding surfaces.



## HOSSEIN REZVANI

Another exhibitor we were encouraged to see incorporating traditional patterns and techniques with a more contemporary aesthetic was Hossein Rezvani. All of the works on his stand were beautifully crafted and in many cases incorporated fabulously lustrous yarns, but it was his Bakhtiar 2011 rug that truly attracted our attention. This product hit the mark with its on-trend use of a charcoal grey and wonderfully rich amethyst jewel combination. The intelligent subtraction of design elements from a very traditional pattern left an intriguing abstract design.